



2014 Business Meeting

November 13th, 2014

Financial Overview

	2013 Actuals	2014 Budget	2014 Revision	Revision Variance
Total Chapter Revenue	133,739	142,976	176,342	33,367
Misc. Revenue	0	20,199	0	(20,199)
Total Chapter Expenses	106,640	163,175	171,471.50	8,297
Chapter Net	\$27,099	\$0	\$4,870.83	\$4,871

Current Assets as of Oct. 31, 2014

Checking Account	\$227,601
Investment Account	\$103,575
CD's	\$66,959
PayPal	\$19,816
Cash	\$100
	\$418,051

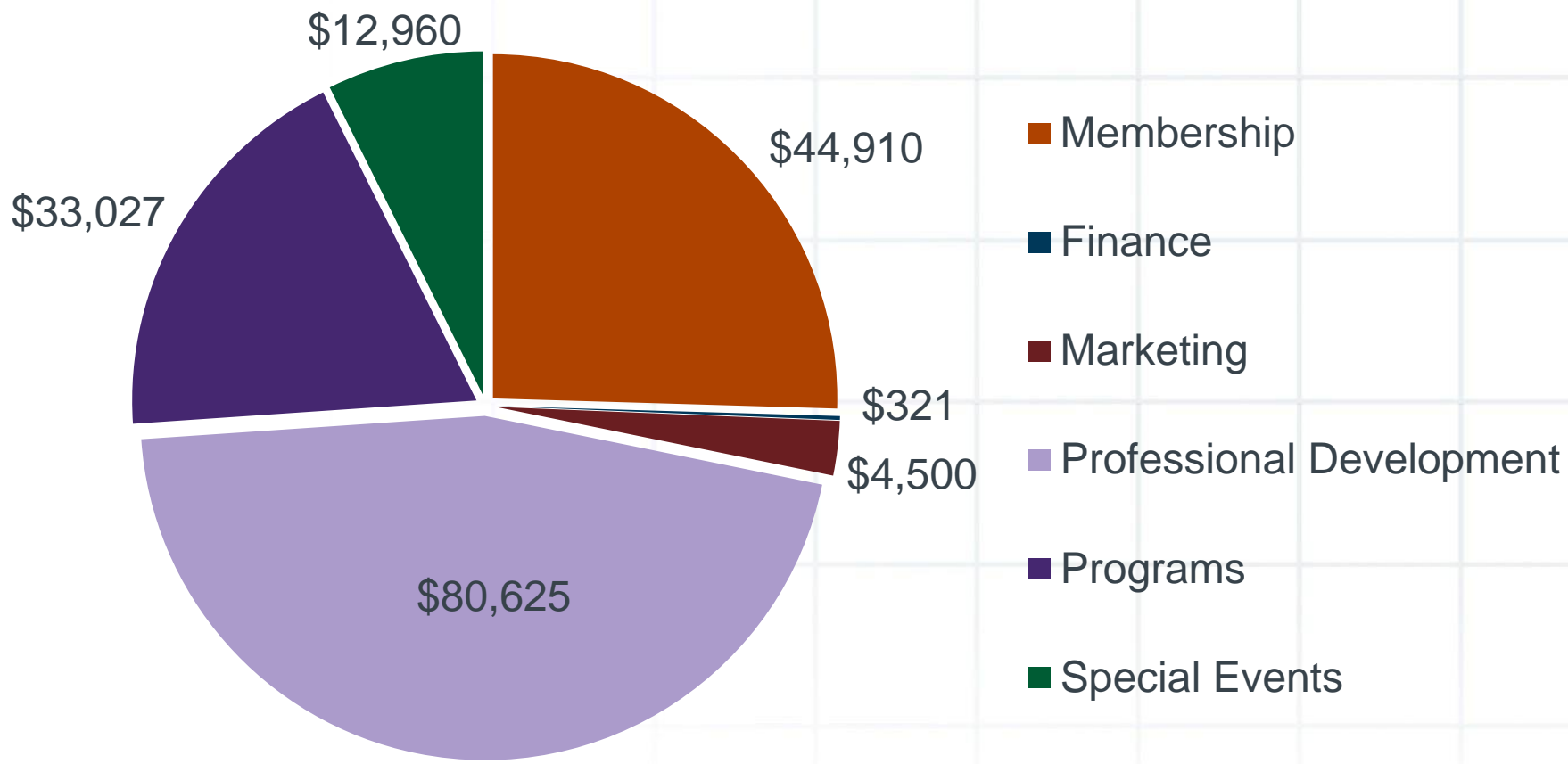
Reserves Ratio

Assets	\$418,051
Expenses	\$171,472
	2.44

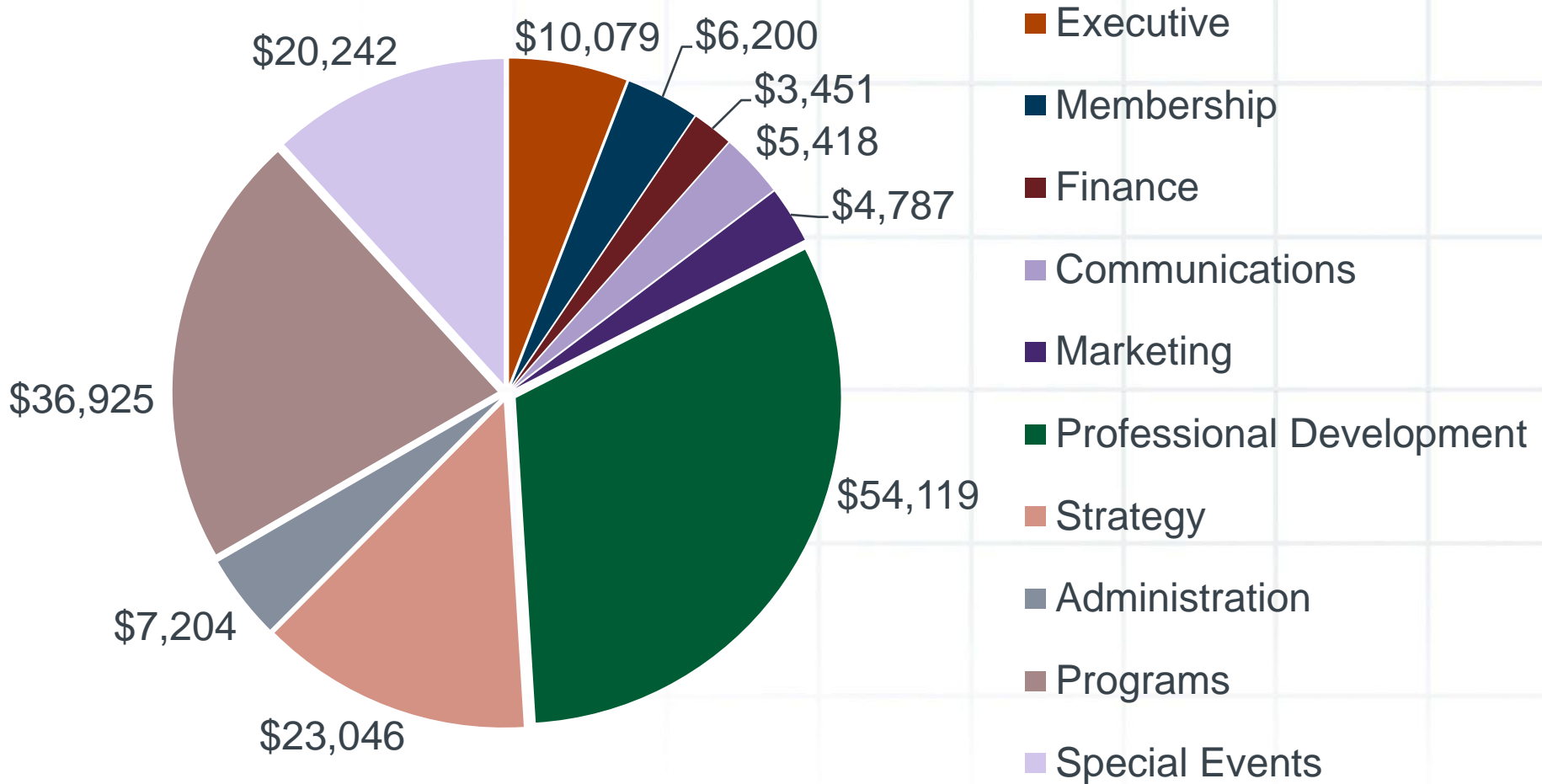
Our Budget

	2013 Actuals	2014 Budget	2014 Revision	Revision Variance
Executive Net (Deficit)	(5,373.07)	(9,550.00)	(10,078.84)	(528.84)
Total Membership Revenue	42,380.00	42,000.00	44,910.00	2,910.00
Total Membership Expense	1,507.36	7,000.00	6,200.00	(800.00)
Membership Net (Deficit)	40,872.64	35,000.00	38,710.00	3,710.00
Total Finance Revenue	288.21	320.71	320.59	(0.12)
Total Finance Expense	3,100.50	3,435.00	3,451.34	16.34
Finance Net (Deficit)	(2,812.29)	(3,114.29)	(3,130.75)	(16.46)
Communications Net (Deficit)	(3,106.09)	(5,395.00)	(5,418.37)	(23.37)
Total Marketing Revenue	1,444.50	4,500.00	4,500.00	0.00
Total Marketing Expense	1,230.80	4,737.47	4,787.16	49.69
Marketing Net (Deficit)	213.70	(237.47)	(287.16)	(49.69)
Total Professional Development Revenue	58,074.60	61,600.00	80,624.73	19,024.73
Total Professional Development Expense	31,397.46	48,576.43	54,119.18	5,542.74
Professional Development Net (Deficit)	26,677.14	13,023.57	26,505.56	13,481.99
Strategy Net (Deficit)	(23,410.65)	(25,300.00)	(23,046.11)	2,253.89
Administration Net (Deficit)	(5,240.51)	(5,639.00)	(5,667.54)	(28.54)
Total Programs Revenue	31,552.00	34,555.00	33,027.00	(1,528.00)
Total Programs Expense	32,273.11	40,006.10	36,924.87	(3,081.23)
Programs Net (Deficit)	(721.11)	(5,451.10)	(3,897.87)	1,553.23
Total Special Events Revenue	0.00	0.00	12,960.00	12,960.00
Total Special Events Expense	0.00	12,000.00	20,242.09	8,242.09
Special Events Net (Deficit)	0.00	(12,000.00)	(7,282.09)	4,717.91
Total Fixed Assets Expense	0.00	1,536.00	1,536.00	0.00

Revenue

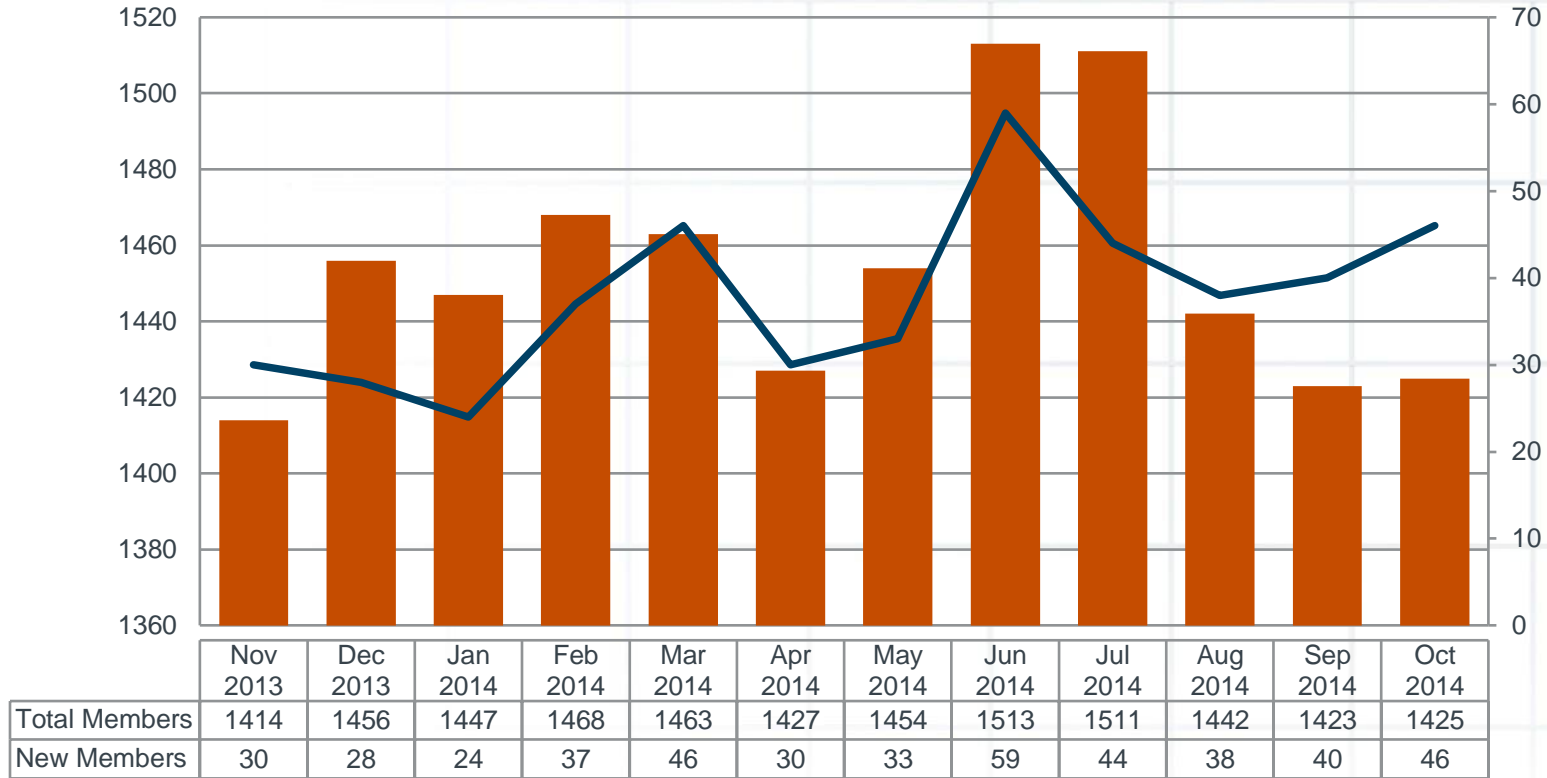


Expenses



Membership Numbers

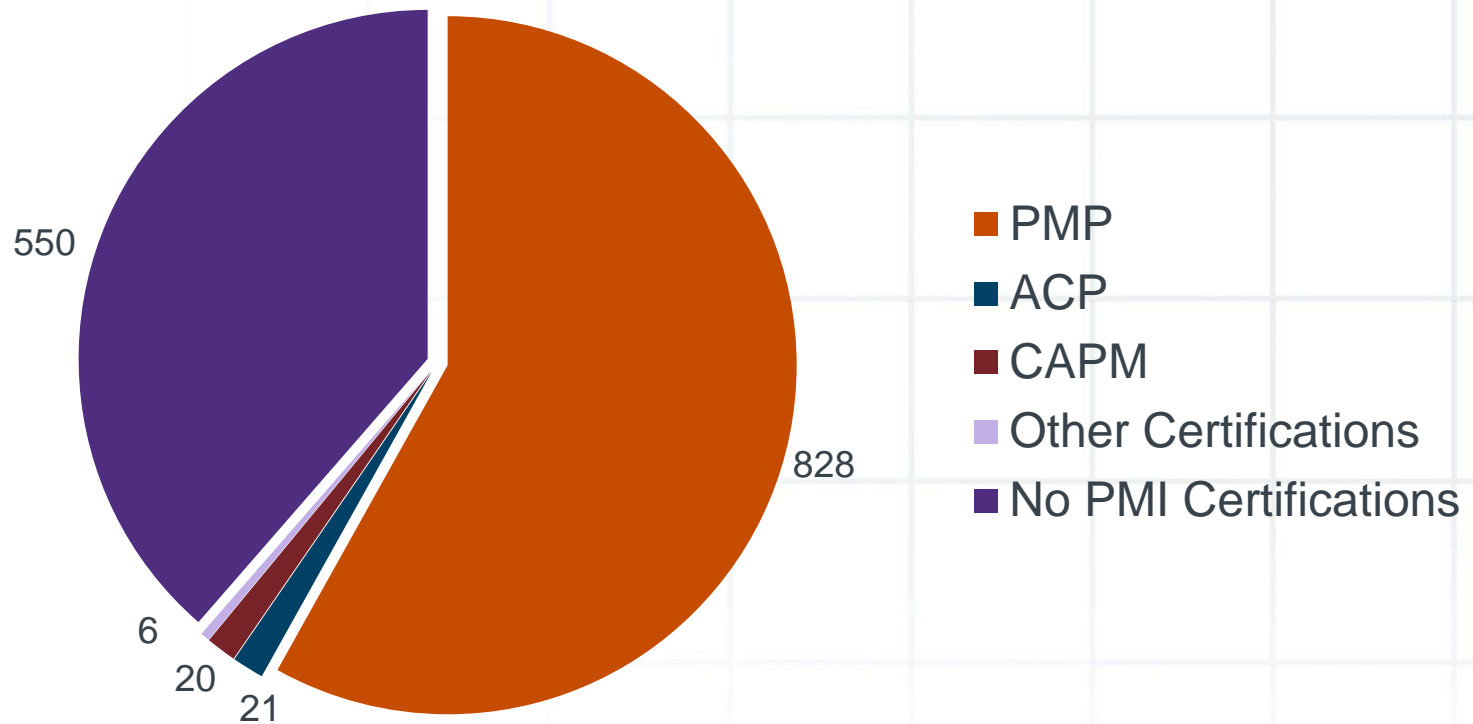
Total and New Membership



■ Total Members
 — New Members

Membership Certifications

PMI Certifications



Program Registration

Program	Meetings	Total	Average	Unique
Culver City	9	518	57.6	264
Alhambra	10	131	13.1	89
Burbank	6	99	16.5	70
Downtown Breakfast	3	280	93.3	236
North Los Angeles	8	226	28.3	94
Pasadena*	10	300	30	
San Fernando Valley	10	512	51.2	236
South Bay	9	247	27.4	163
Transitions	9	245	27.2	147
	74	2,558	38.3	1438
Mentor Program	2	72	10 mentor/mentee pairs	
Book Club	6	60-75		

Professional Development

Exam Preparation

Winter PMP Prep Boot Camp	14
Spring CSM Workshop	35
Summer PMP Prep Boot Camp	12
Fall PMP Prep Workshop	15
PMI-ACP Workshop	3
Fall CSM Prep Workshop	34
	113

Seminars

Turbo-Charge Business Performance with Metrics	6
Healthcare Management for Project Managers	24
Strategic Project Leadership Certificate	12
Strategic Project Leadership Certificate	8
MS Project for Intermediate Users	32
Transitioning Out of a Job - Career Seminar	20
General Negotiation Techniques	19
Managing Virtual Teams in Agile World	7
Agile PM 101 - Best Practices	14
Salary Negotiation Theory	13
Lean Project Management	5
Healthcare Management for Project Managers	6
	160

PMI Leadership Conferences



2014 Region 7 Conference
in Las Vegas



2014 Leadership Institute Meeting
for North America in Phoenix

40th Anniversary!



On Saturday July 12th, we celebrated our 40th anniversary on the Queen Mary in Long Beach.

Organizational Outreach



2014 Southland Technology Conference
GEEK TO CHIC: LEVERAGING GAME CHANGING TECHNOLOGY
October 24th-25th at the Long Beach Hilton



Region 7 Leadership



Deby Covey, Region 7 Mentor in 2016

Deby is currently serving as the Region 7 Finance Mentor, and will shadow current Region 7 mentor Tony Appleby in 2015

Partner Organizations



KAISER
PERMANENTE®



CALIFORNIA DEPARTMENT OF
Mental Health

DeVry 
University

ITT
ITT Technical Institute


COLLEGE OF THE CANYONS

Volunteer Engagement

In 2014, PMI-LA has been supported by 150 active volunteers!

This puts our level of engagement at around 10% (most chapters are closer to 2-3%!)

In 2013, we had 126 active volunteers – a 20% increase!

Thank you to all the volunteers, and everyone who supports PMI and the Los Angeles Chapter. We can't do it without you!