



LOS ANGELES CHAPTER

2017 Business Meeting

January 12th, 2017

2016 Snapshot and 2014-16 Trends

FINANCIAL

Financial Overview

	2015 Actuals	2016 Budget	2016 Actuals	Variance
Total Chapter Revenue	145,474	134,987	115,969	(19,018)
Total Chapter Expenses	91,016	134,309	101,852	(32,457)
Chapter Net	\$54,458	\$679	\$14,117	\$13,439

Current Assets as of Dec. 31, 2016	
Checking Account	259,701
Investment Account	149,620
CD's	66,959
PayPal	641
Cash	100
	\$477,021

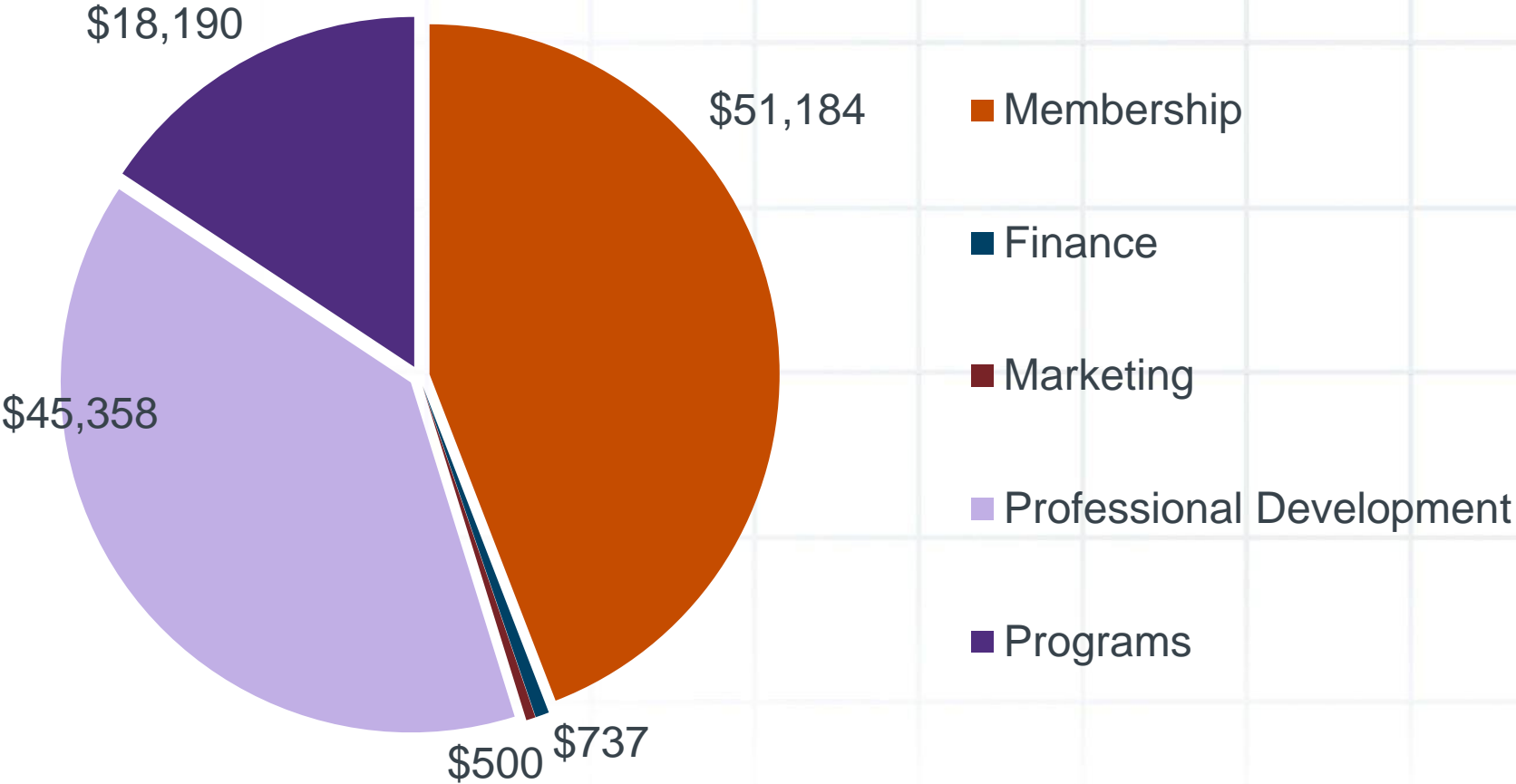
Reserves Ratio	
Assets	477,021
Expenses	101,852
	4.68

Surplus Capital	
	\$273,318

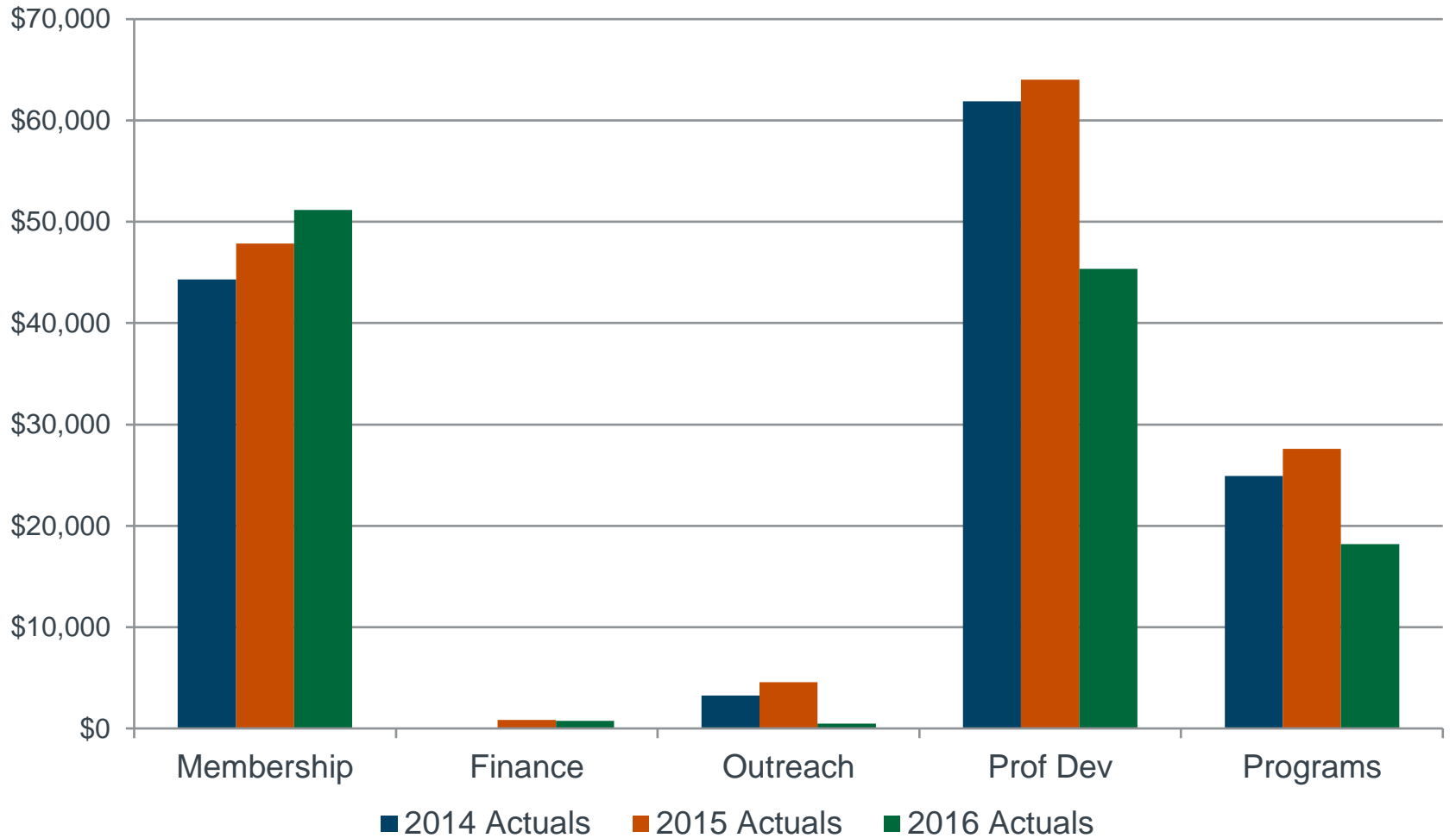
Our 2016 Budget

	2015 Actuals	2016 Budget	2016 Actuals	Variance
President Net (Deficit)	(1,528)	(4,300)	(1,504)	2,796
Total Membership Revenue	47,840	48,157	51,184	3,027
Total Membership Expense	10,554	18,700	10,590	(8,110)
Membership Net (Deficit)	37,286	29,457	40,593	11,136
Total Finance Revenue	826	980	737	(243)
Total Finance Expense	3,567	4,030	3,713	(317)
Finance Net (Deficit)	(2,742)	(3,050)	(2,976)	74
Communications Net (Deficit)	(5,458)	(11,400)	(12,485)	(1,085)
Total Marketing Revenue	4,580	4,000	500	(3,500)
Total Marketing Expense	1,797	5,602	117	(5,485)
Marketing Net (Deficit)	2,783	(1,602)	383	1,985
Total Professional Development Revenue	64,035	58,850	45,358	(13,492)
Total Professional Development Expense	23,030	24,067	22,618	(1,449)
Professional Development Net (Deficit)	41,004	34,784	22,740	(12,044)
Strategy Net (Deficit)	(15,543)	(26,500)	(17,221)	9,279
Administration Net (Deficit)	(3,676)	(5,530)	(1,830)	3,700
Total Programs Revenue	27,594	23,000	18,190	(4,810)
Total Programs Expense	25,863	34,180	31,774	(2,406)
Programs Net (Deficit)	1,731	(11,180)	(13,584)	(2,404)
Special Projects Net (Deficit)	(4,000)	(12,000)	--	
Total Fixed Assets Expense	--	1,500	929	(571)

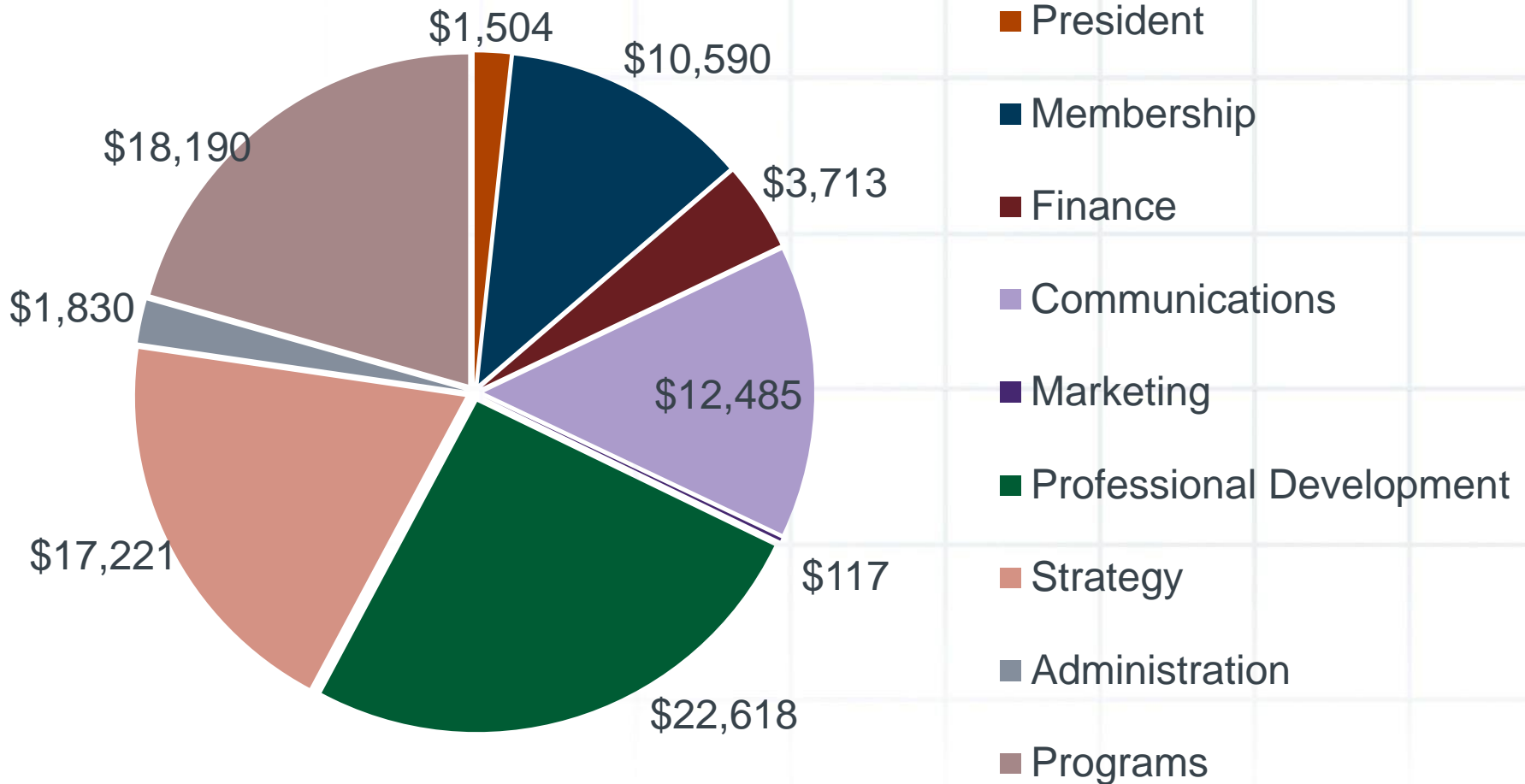
2016 Revenue



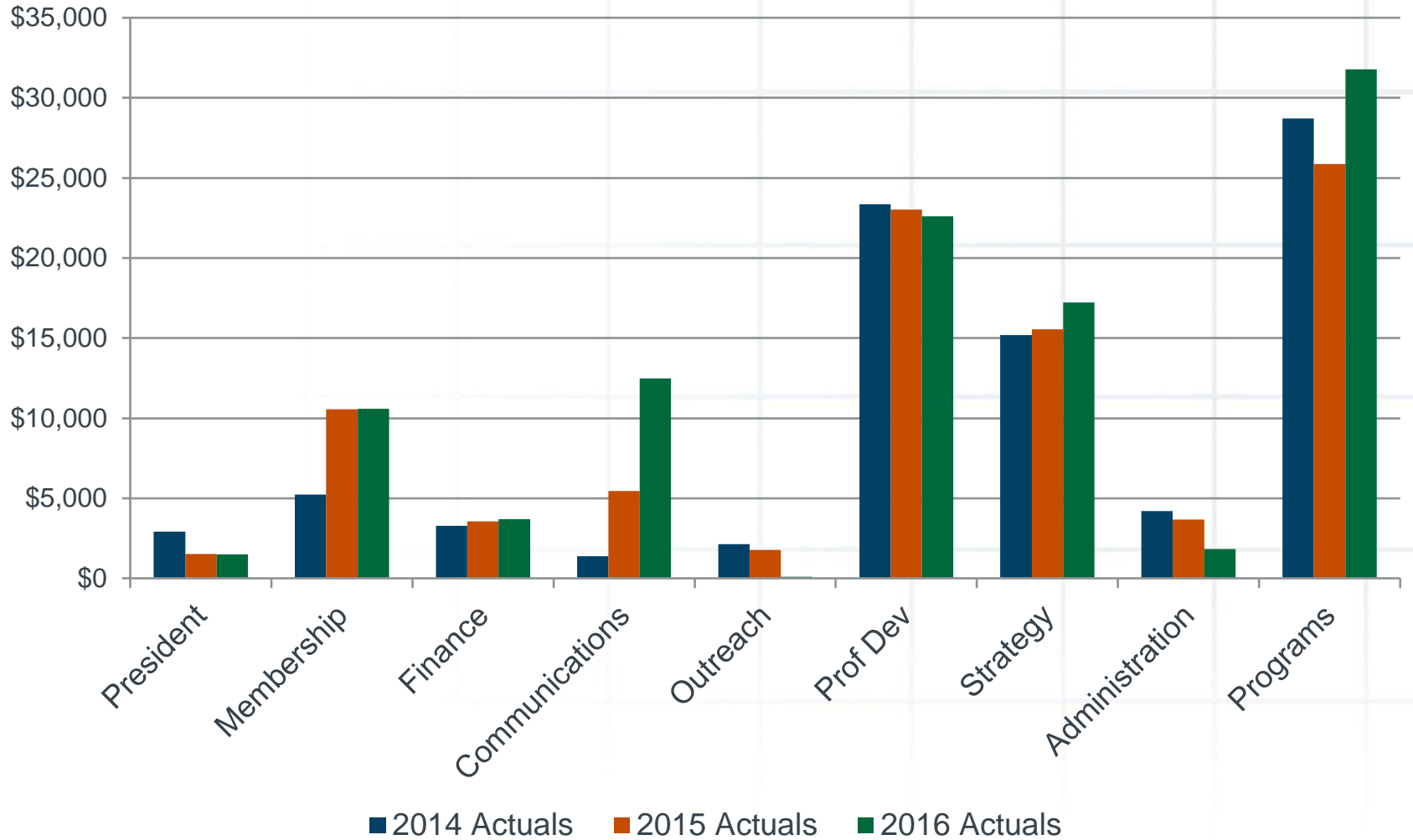
Revenue by Portfolio



2016 Expenses

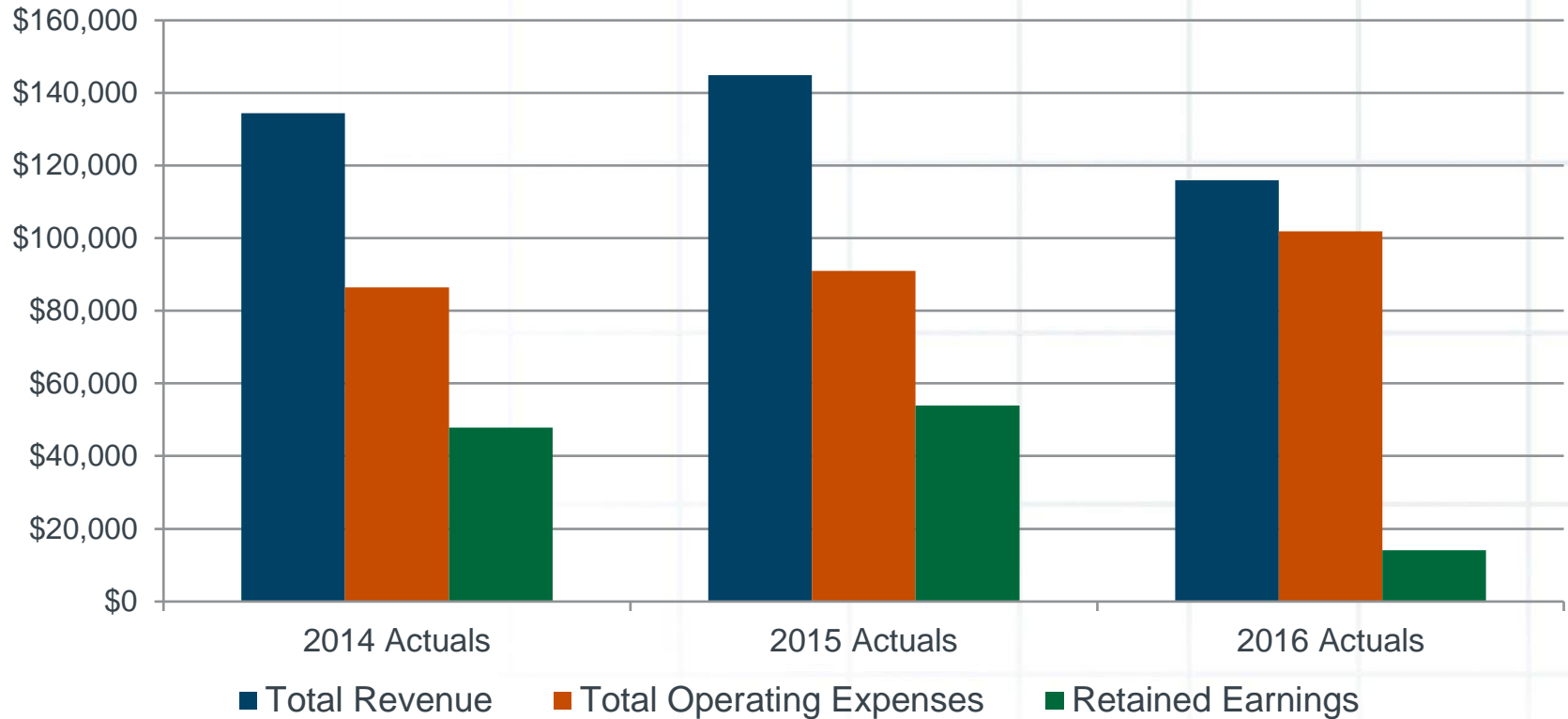


Expense by Portfolio

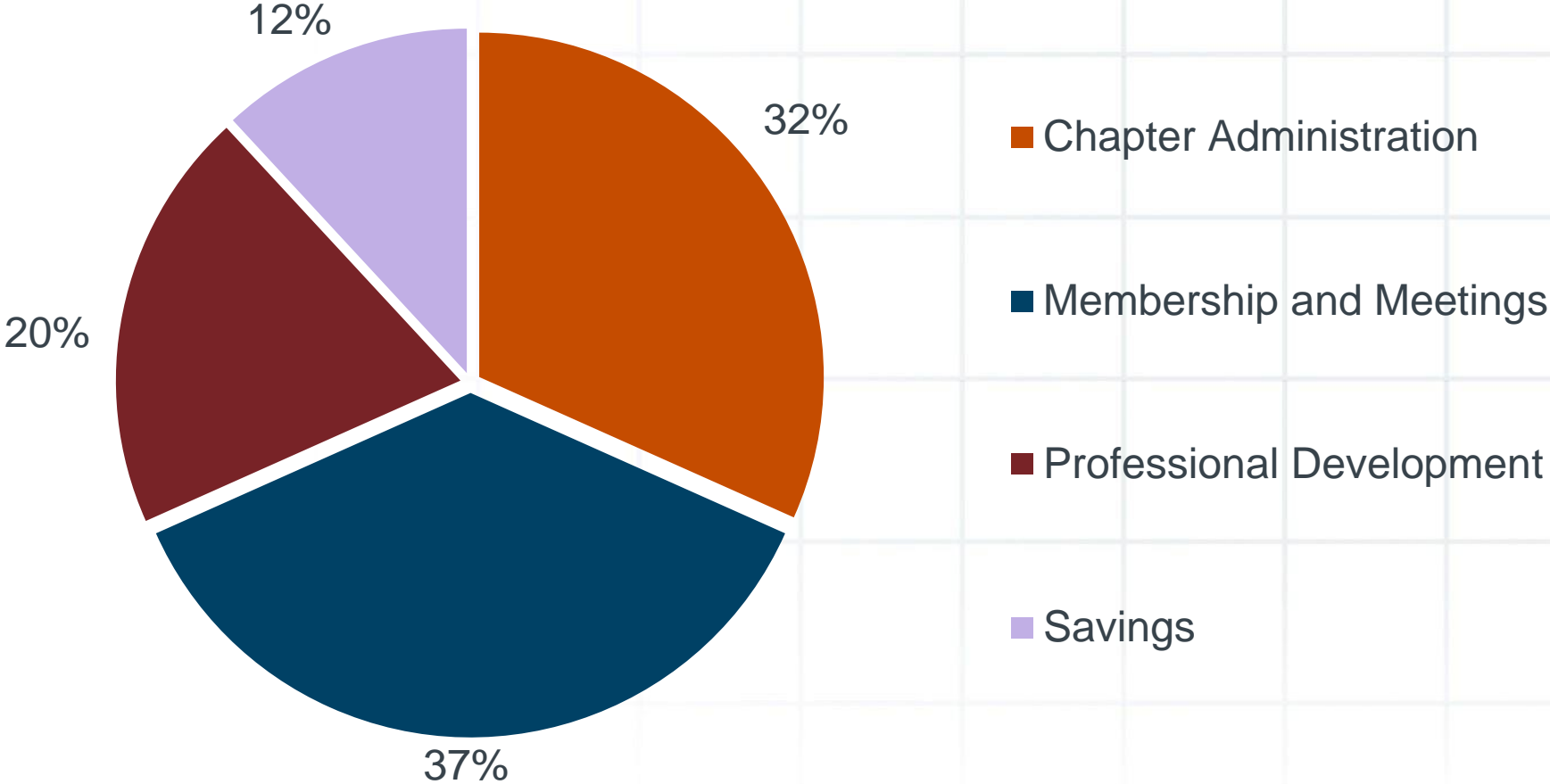


Chapter Financial Trends

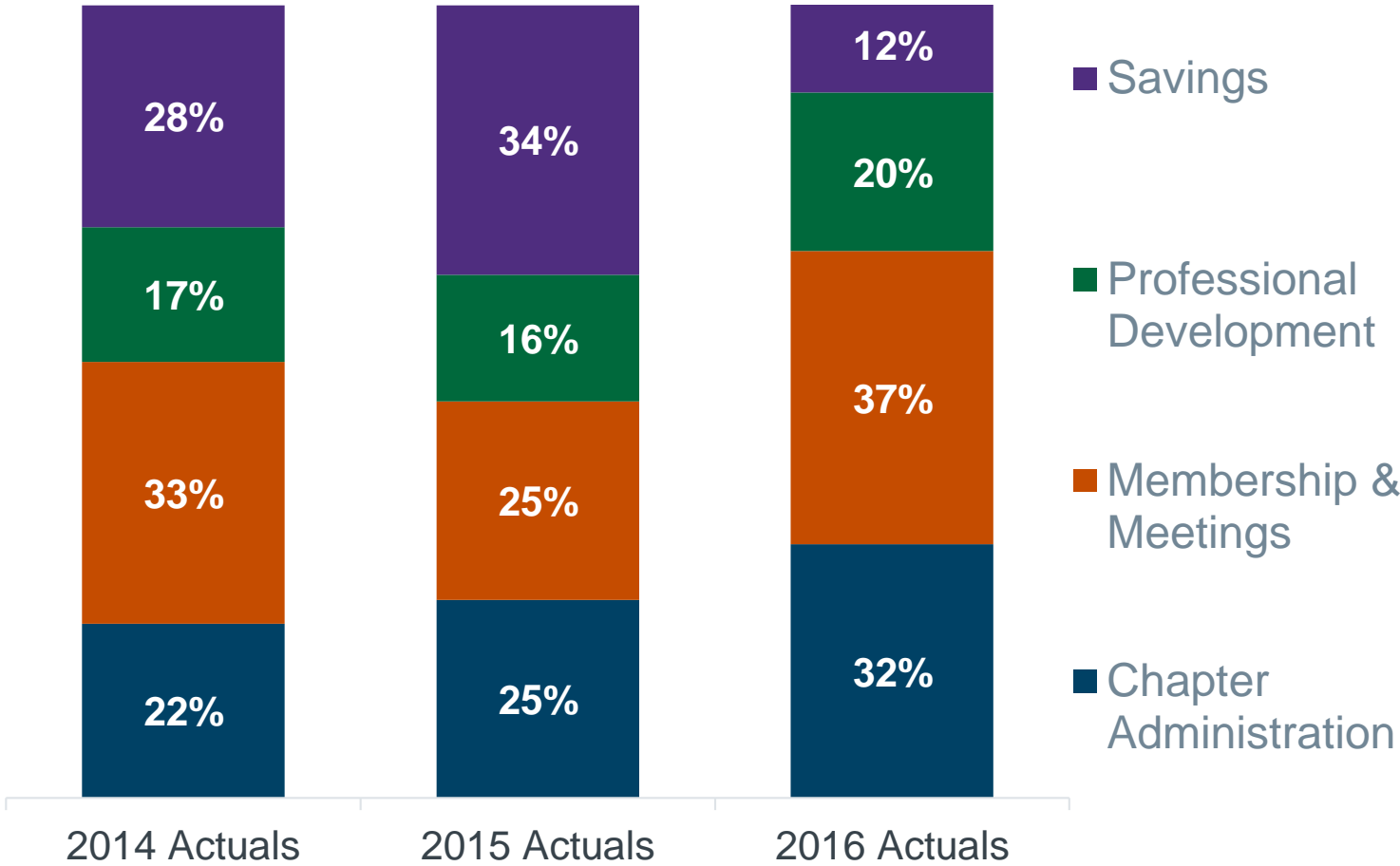
Chapter Financial Trends



Where Your Dues Go



Where Your Dues Go

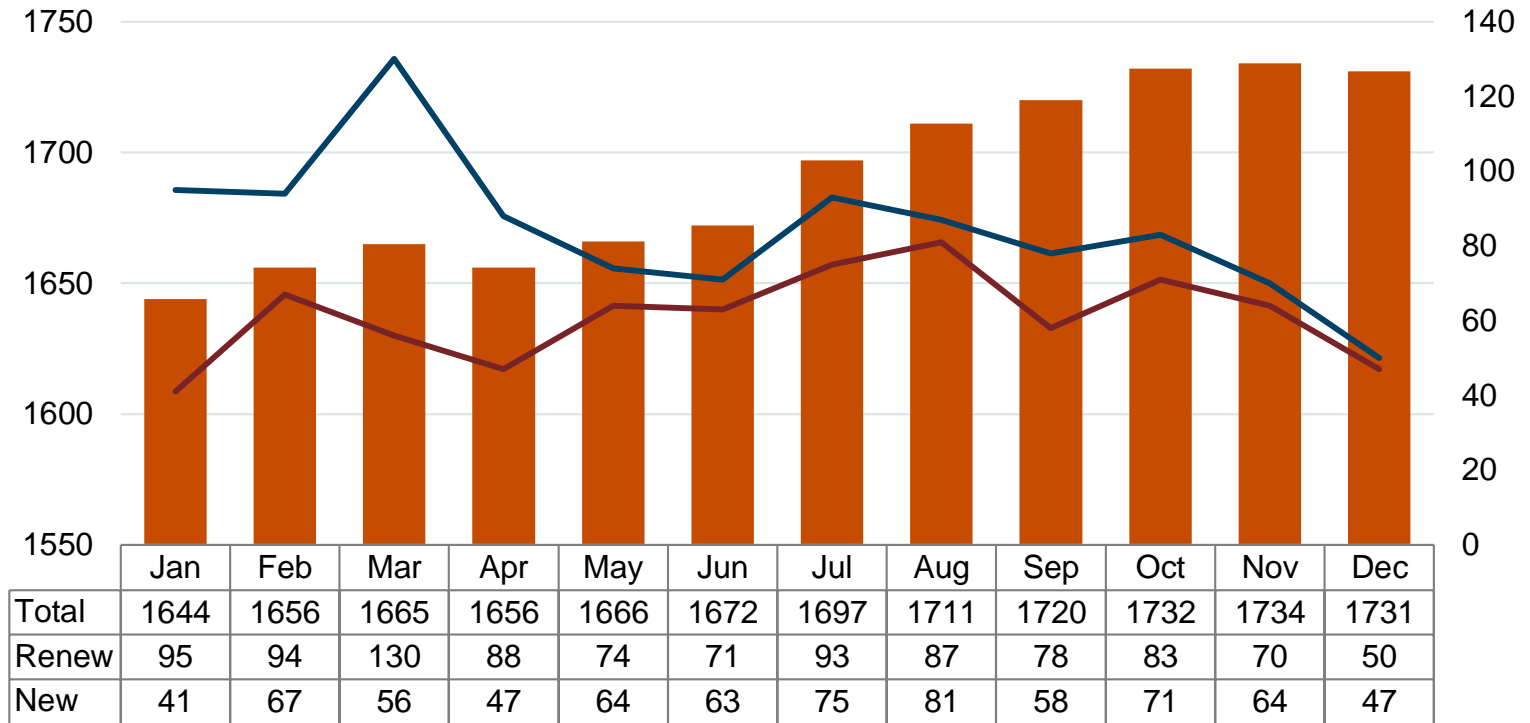


Inside and Outside Our Chapter

ENGAGEMENT

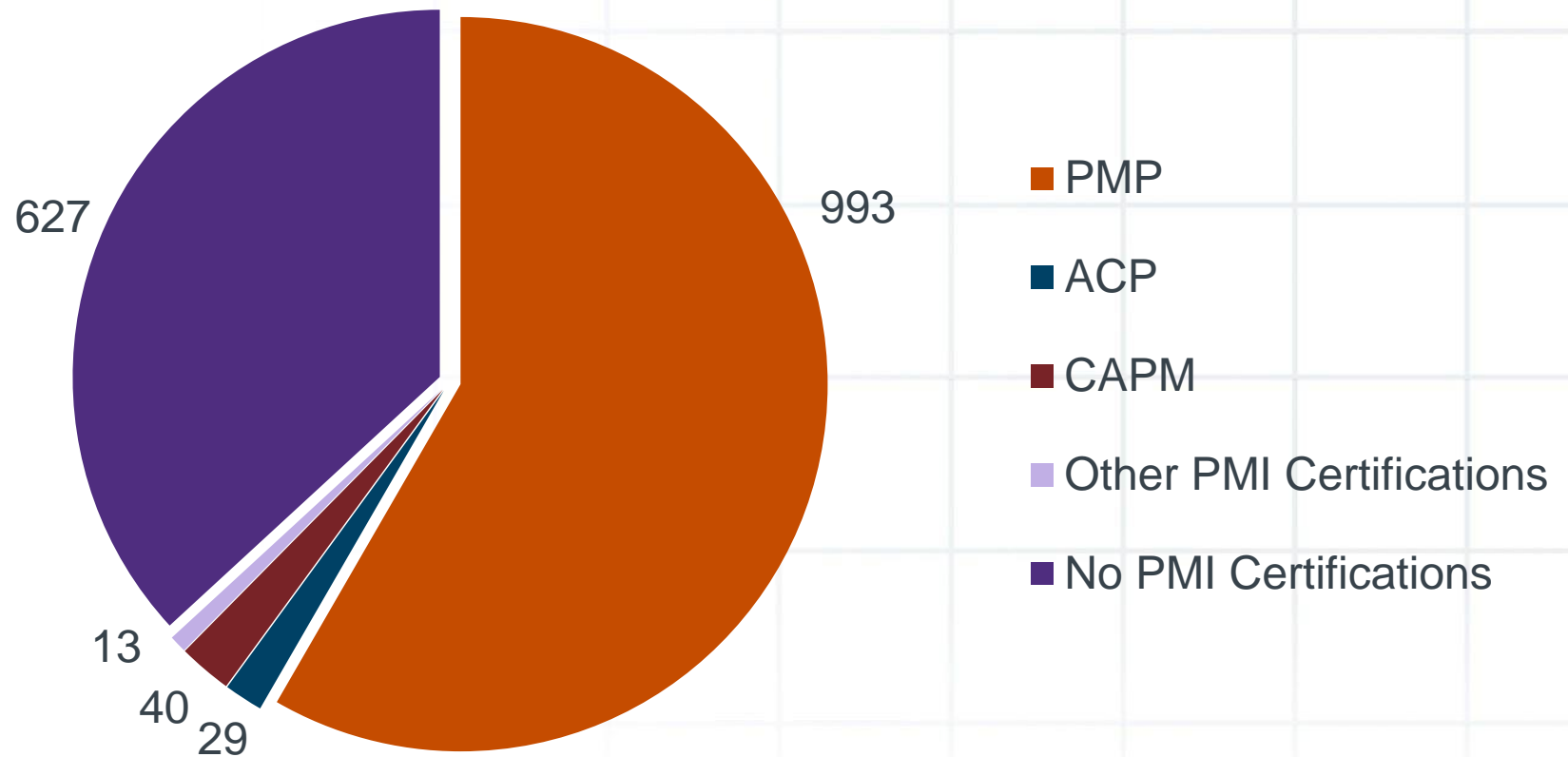
2016 Membership Numbers

Total, Renewing, and New Members



■ Total
 — Renew
 — New

Membership Certifications



Programs Registration

Program	Meetings	Total	Average
Culver City	10	551	55
Downtown Breakfast	4	320	80
North Los Angeles	6	131	22
San Fernando Valley	4	112	28
South Bay	4	102	25
Transitions	10	237	24
	38	1453	38

Pasadena	12	Registration
Book Club	8	Not Required

Professional Development Registration

Exam Preparation

Winter PMP Prep Boot Camp	14
Spring CSM Workshop	49
Summer PMP Prep Boot Camp	8
Fall PMP Prep Workshop	12
Fall CSM Prep Workshop	44
	127

**Total Prof Dev
Registrations**

301

Seminars

General Negotiation Techniques	17
MS Project Tips & Tricks	40
Leadership Skills for Project Managers	18
Dealing with Difficult People	19
Best Hiring Practices for Project Managers	14
Build Cohesive and Productive Teams	8
Managing Difficult Projects and People	8
Project Requirements	14
Dale Carnegie's Drivers for Success	36
	174

Membership Events Registration

Mixers	
El Segundo	23
Burbank	11
	34

Industry Forums	
Healthcare (August)	30
Entertainment (October)	18
Healthcare (November)	23
	71

Orientations	
September	10
October	40
November	21
	71

Volunteer Recruitment	
January	70
	70

Total Membership Registrations	246
---------------------------------------	------------

Partner Organizations



**KAISER
PERMANENTE®**



CALIFORNIA DEPARTMENT OF
Mental Health

DeVry 
University

America's **Job** Center
of CaliforniaSM
LA County



AAA Institute


COLLEGE OF THE CANYONS

Volunteer Engagement

In 2016, PMI-LA was supported by 106 active volunteers!

This puts our level of engagement a bit over 6% (most chapters are closer to 2-3%!). Those volunteers reported 7,927 hours of donated time.

Thank you to all the volunteers, and everyone who supports PMI and the Los Angeles Chapter. We can't do it without you!

2017 and Beyond

A LOOK AHEAD

2017 (Volunteer) Management

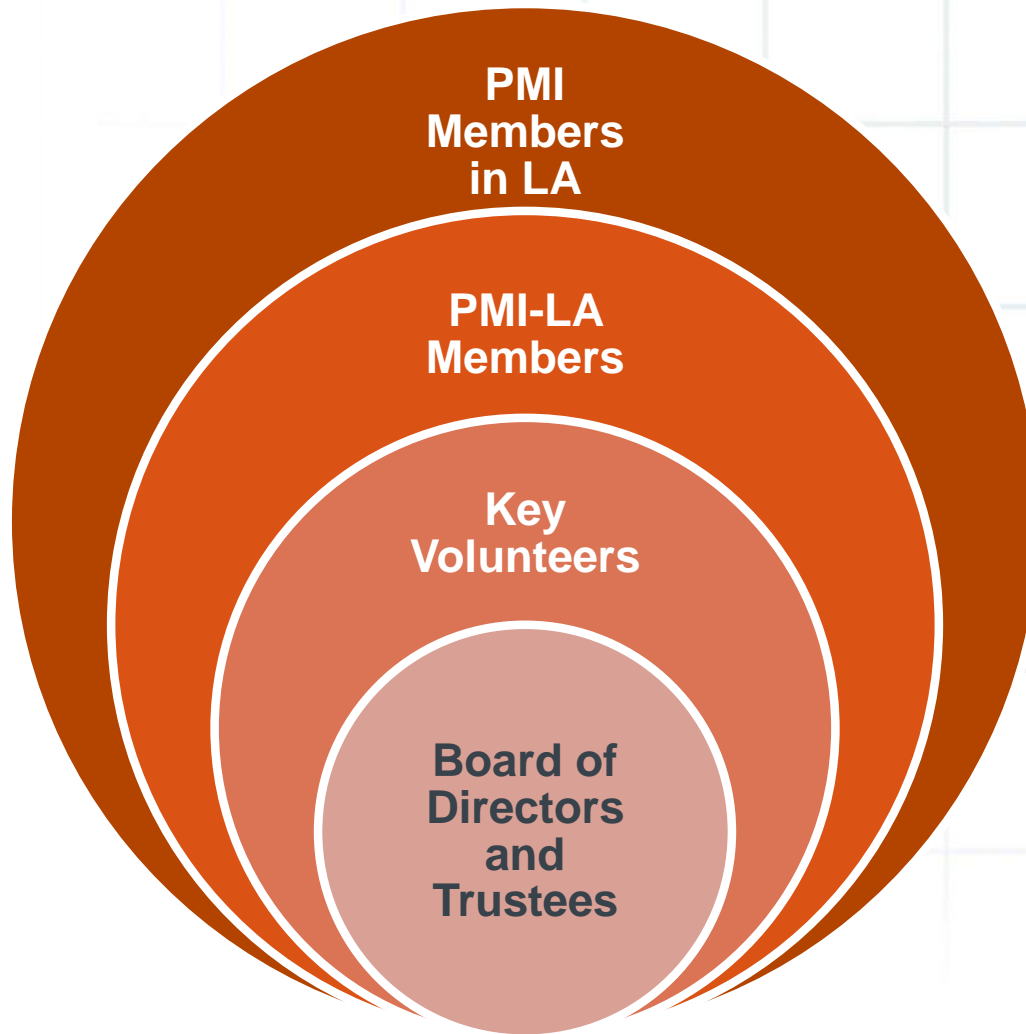
Board of Directors

- Two open positions (applications under review)
 - VP of Strategy/President-Elect
 - VP of Professional Development

Trustees

Ida Harding (1999-2000)	Maria McHolland (2001)	Bernie Morse (2006)
Jeanne Takano (2007)	Barbara Cook (2008)	AJ Jafari (2010)
Pan Kao (2012)	Deby Covey (2013)	Kay Rathfelder (2015)

Our Organization



What We're Working on This Year for You



Any questions?

Any suggestions for the new year?

What do you want us to focus on?

WHAT ABOUT YOU?