

# WEEKLY NEWSLETTER

February 09, 2026

## Chapter Announcements



**NEW**

[Apply Your PM Skills, Even Without the PM Role](#)

by **Angelo Salazar, PMP**

You don't need the title "Project Manager" to be one. In our newest PMI-LA PULSE post, Angelo Salazar shares how he used PMP training and bite-sized project systems to lead with clarity, even when formal projects were on pause. From stakeholder engagement to Kanban boards, retros, and even AI tools—learn how you can apply your PM toolkit anywhere.

Read the full article [here](#).

---

### Announcement of Open VP of Operations/President-Elect Position

Dear PMI-LA Chapter Members,

Grow your Project Management skills and value to employers by considering applying for this open position on the PMI-LA Board of Directors. Grow your leadership experience, grow your PM skills, grow your professional network, and grow your resume and online profiles.

There are only two days left — interested members should complete the self-evaluation form by February 10th, 2026.

Learn more [here](#).

## Hot Jobs

### EXECUTIVE OFFICE



**BOARD OF SUPERVISORS  
COUNTY OF LOS ANGELES**

### INFORMATION RESOURCE SPECIALIST, BOARD OF SUPERVISORS

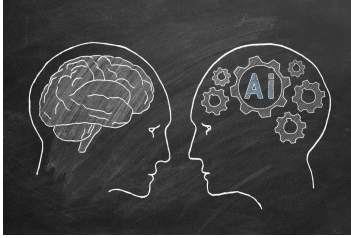
Equivalent to: IT Project Manager

The Executive Office (EO) of the Board of Supervisors (Board), County of Los Angeles

Los Angeles County seeks a motivated Information Resource Specialist for the Executive Office of the Board of Supervisors. You'll analyze, design, and implement complex systems to support County governance. The role offers a flexible hybrid work environment. Ideal for experienced professionals in systems analysis and project management. This is an emergency hire.

Learn more and apply [here](#) to shape the digital infrastructure of one of the nation's largest local governments.

# This Week



## [From Chaos to Clarity: Communication Skills Every Project Manager Needs to Succeed in the AI Era \(Online\)](#)

**Tuesday, February 10th, 2026**

**5:30 pm to 7:30 pm PT**

**Speaker: Judy Hersch** - Founder and CEO of Beyond Limits Center LLC

Join us with Judy Hersch on learning how to master the Interactive Communication Model, Emotional Intelligence, and the OSCAR Coaching Model. Learn to navigate conflict using the Thomas-Kilmann framework, build trust, and develop high-performing teams. This event offers strategies for fostering collaboration, motivation, and peak performance in diverse and psychologically safe environments.

[Learn more](#)



## [MULTI-CHAPTER MEETING | Project Management in History: The Original Jeeps \(Online\)](#)

**Thursday, February 12th, 2026**

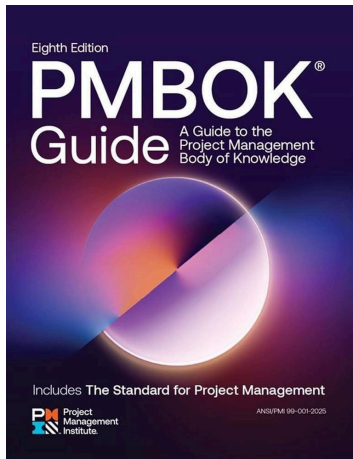
**6:00 pm to 7:00 pm PT**

**1.0 PDU Ways of Working (Technical)**

Buckle up for a high-octane journey into the origins of the original Jeep, where high-stakes innovation meets the ultimate masterclass in agile execution. Join us for an electrifying multi-chapter virtual event as author Paul Bruno reveals how a desperate race against time birthed an icon through collaboration and problem-solving. This isn't just a history lesson—it's a deep dive into the gritty, real-world project management tactics that conquered impossible

deadlines and shifted the gears of an entire industry. [Learn more](#)

## Chapter Events Updates



[Multi-Chapter | Navigating PMBOK 8: Principles, Systems Thinking & Value \(Online\)](#)

**Thursday, February 19th, 2026**

**2:00 pm to 3:00 pm PT**

**1 PDUs Ways of Working (Technical)**

Melia Abreu, a strategic facilitator and PMP® certified leader, has 25+ years in healthcare, education, aviation, and nonprofits. At Mana'olana International, she offers project management training, cultural transformation, and leadership development. Join her to explore the 12 PMBOK® principles, learn systems thinking, and shift to value-driven project leadership. [Learn more](#)



[PMI-LA 2026 Volunteer Recruiting Event \(In Person\)](#)

**Saturday, February 21st, 2026**

**10:45 am to 1:30 pm PT**

Location: Manhattan Beach Library - 1320 Highland Avenue, Manhattan Beach, CA, 90266

PMI-LA is an avenue to forming meaningful connections and expanding your professional network. Embrace this mutually beneficial process of supporting our activities and get a glimpse into our exciting volunteer opportunities! Log on to the PMI-LA website as a member, navigate to [Members](#)

[Only/Volunteer Positions Available](#), and let your journey of discovery begin! [Learn more](#)



[BOOK CLUB](#) | ["Atomic Habits" by James Clear](#)  
[\(Online\)](#)

**Saturday, February 28th, 2026**

**11:00 am - 1:00 pm PT**

**3 PDUs Ways of Working (Technical)**

This month, the PMI-LA Book Club will discuss "Atomic Habits" by James Clear. Earn PDUs by sharing your thoughts on this popular book with fellow and future project managers.

Additionally, there will be a presentation on a project management topic. [Learn more](#)

Early Bird deadline is February 21st, 2026, at 12:00 AM.

## Professional Community Events



[PMI-CIE | Brand and Land Hybrid Event \(Hybrid\)](#)

**Saturday, February 21st, 2026**

**8:00 am - 1:00 pm PT**

**5 PDUs**

The PMI California Inland Empire Chapter is excited to bring back the Brand and Land Main Event! Following the overwhelmingly positive feedback we received last year, we're thrilled to partner once again with John Signo and his team to deliver an unforgettable learning experience. Whether you're actively job hunting or simply looking to sharpen your professional edge, this

event will equip you with the skills and confidence to take your career to the next level. [Learn more](#)

**Cost: \$35 PMI-LA Members in-person, \$25**

**Virtual - select PMI-CIE Member at registration.**

*This is a professional community event not organized by the PMI-LA Chapter.*

---



### Exploring AI Integration in Project Management | Call for Research Volunteers

**In a one-time, 45-60 minute interview,** participants will be asked to discuss their experiences using AI within project management contexts.

This qualitative research study examines how project management professionals are integrating artificial intelligence (AI) into project monitoring and control workflows. As AI-driven tools, as predictive analytics, automated dashboards, and risk forecasting, become increasingly prevalent in project environments, the study seeks to understand how these technologies are applied in practice, the challenges professionals encounter during implementation, and the strategies that support effective adoption.

[Learn more](#)

*This is a professional community event not organized by the PMI-LA Chapter.*

---



### Innovative Leadership | Leadership Development Program (Online)

**Self-Paced**

**60 PDUs**

Join the Innovative Leadership Institute in a transformative leadership journey.

Why This Class?

**Depth:** We go beyond the ‘what’ of leadership, exploring the ‘how’ and facilitating an introspective look at your leadership behaviors. You move beyond talking about leadership to becoming a highly effective leader. [Learn More](#)  
**\$50 off with a discount code for PMI-LA Chapter members.**

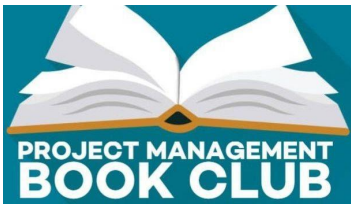
*This is a professional community event not organized by the PMI-LA Chapter.*

## Additional Resources



**VOLUNTEER:** No matter where you are on your PM or BA career journey, we've got opportunities to match your interests. Make a difference and earn PDUs volunteering with PMI-LA!

**Applications to volunteer with the chapter will open in January 2026 — stay tuned!**



**BOOK CLUB:** Improve your project management skills, gain PDUs, and interact with fellow members by joining the [Project Management Book Club](#). You don't have to be PMP-certified, nor a member of PMI to join.



**PROFESSIONAL COMMUNITY EVENTS:** Every now and again, your hardworking board negotiates a special event for our members and their families.

**[Check Out The Upcoming Events!](#)**



**PMI x AI: Stay Ahead. Lead the Future of AI in Project Management.** PMI X AI eLearning. Stand out when you elevate your project management skills with AI [Learn More About It Here!](#)





**JOBS BOARD:** The PMI jobs board provides a consolidated view of some of the more popular job search sites, and it gives you the power to sort for the level of employment and industry that you are most interested in! [Check Out Jobs!](#)

## Sponsors

**seibert//**



Platinum  
Solution Partner



**Caltech** Center for Technology &  
Management Education



FACEBOOK



TWITTER



LINKEDIN



Instagram



Website



TikTok

Copyright © 2026 PMI-Los Angeles Chapter, All rights reserved.

You are receiving this email because you are a chapter member or opted in via our website or social media platforms.



